

Job Name: _____

Location: _____

Purchaser: _____

Engineer: _____

Submitted To: _____

For: Reference Approval Construction

Submitted By: _____

Date: _____

Unit Designation: _____

Cooling Performance:

Nominal Capacity	19,100 Btu/h
Nominal Sensible Capacity	14,200 Btu/h
EWT Range	40-50°F (5-10°C)
Nominal Flow Rate	4.5 GPM
Nominal Pressure drop	5.5 Ft/Hd

Heating Performance:

Nominal Capacity	19,300 Btu/h
EWT Range	100-125°F (38-52°C)
Nominal Flow Rate	3.0 GPM
Nominal Pressure drop	2.5 Ft/Hd

Notes:

- Cooling Capacity is based on 50°F Entering Water Temp and 80°F DB/67°F WB Entering Air Conditions.
- Heating Capacity is based on 110°F Entering Water Temp and 70°F DB Entering Air Conditions.
- Refer to detailed capacity tables for further information pertaining to the entire entering water temperature range and for flow rates and pressure drop.

Airflow Rate:

Nominal CFM	600 CFM
Total External Static Pressure	Std: 0.3" WG / Max: 0.5" WG
Blower Speed setting	"C" FIELD SETTING
Motor rating	1/3 HP

Airflow arrangement

Up-flow, Horz. Left, Horz. Right (Possible)

Electrical Data:

Power supply	208-230V / 1PH / 60Hz
Min. Circuit Amps (MCA)	3 AMP
Max. overcurrent protection (MOP)	15 AMP
Electrical Heater Options	<input type="checkbox"/> 5kW <input type="checkbox"/> 10kW

Electrical Heat Integral Disconnect:

- Electrical Data for Fan Motor only.
- Factory installed service switch over 10kW (No disconnect).
- See Guide specifications for electrical data for units with factory mounted electric heat.

Physical Data:

Dimension (H x W x D)	40"x20"x20"
Weight	115 lbs
insulation type / R-Rating	1/2"JM TUF-SKIN

Installation Clearances: U.L. Listed for installation with Zero inches Clearance to Combustible materials

Connection type

Inlet / Outlet Connections	3/4"(Nominal)
Connection Type	Sweat
Drain Connections	3/4"(M) NPT

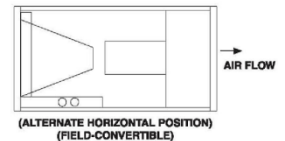
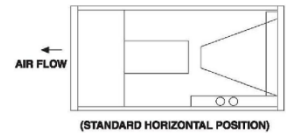
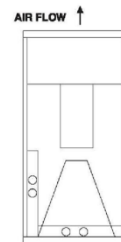
Feature:

Air Filter (MERV 8 Throwaway) 18"x20"x1"

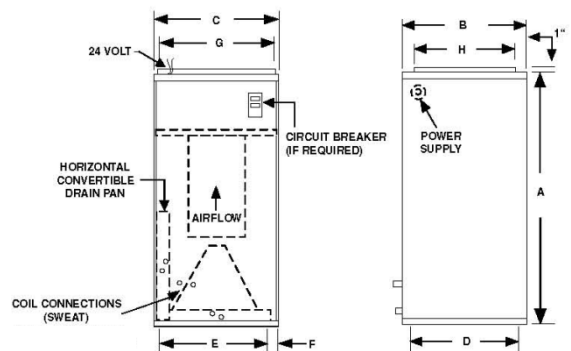


Airflow arrangement

3-WAY AIRFLOW



Physical Dimensions



A	B	C	D	E	F	G	H	FILTER SIZE
40	20	20	18-1/2	16	2	18	16	18x20x1